

$(\alpha_Q = (\text{Adj} \rightarrow \text{Subj})) = f(S)$



Rue d'Aix, Paris

$(\alpha_Q = (\text{Adj} \rightarrow \text{Subj})) = f(U)$



Rue de Musset, Paris

$((\alpha_Q = (\text{Adj} \rightarrow \text{Subj})) = f(E))$



Rue des Rigoles, Paris

$((\alpha_Q = (\text{Adj} \rightarrow \text{Subj})) = f(\text{Sys}))$



Rue Frédéric Sauton, Paris

$(\alpha_Q = (\text{Adj} \rightarrow \text{Subj})) = f(\text{Abb})$



Rue de Montpensier, Paris

$((\alpha_Q = (\text{Adj} \rightarrow \text{Subj})) = f(\text{Rep}))$



Rue de l'Hôtel Colbert, Paris

$$(\beta_Q = (\text{Subj} \rightarrow \text{Transj})) = f(S)$$



Rue de la Mare, Paris

$$(\beta_Q = (\text{Subj} \rightarrow \text{Transj})) = f(U)$$



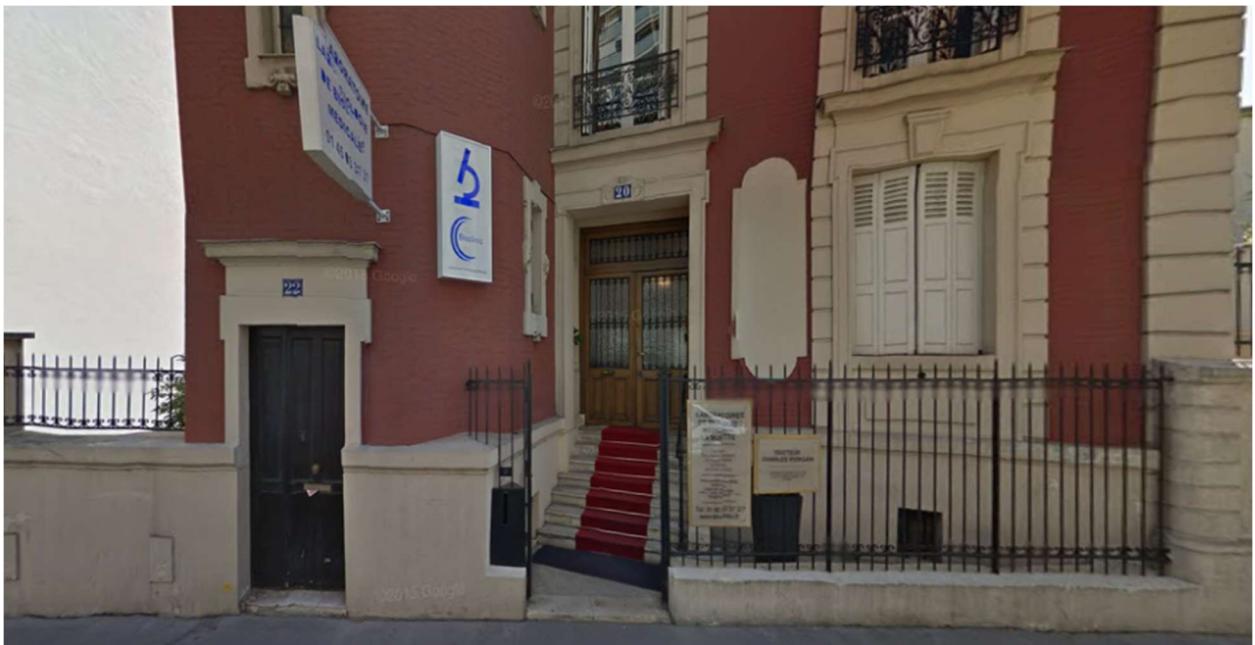
Rue d'Assas, Paris

$(\beta_Q = (\text{Subj} \rightarrow \text{Transj})) = f(E)$



Rue de Varenne, Paris

$(\beta_Q = (\text{Subj} \rightarrow \text{Transj})) = f(\text{Sys})$



Rue de la Pompe, Paris

$(\beta_Q = (\text{Subj} \rightarrow \text{Transj})) = f(\text{Abb})$



Place du Guignier, Paris

$(\beta_Q = (\text{Subj} \rightarrow \text{Transj})) = f(\text{Rep})$



Rue Blainville, Paris

$(\beta_Q = (\text{Subj} \rightarrow \text{Transj})) = f(\text{Ad})$



Rue du Colonel Driant, Paris

$(\beta_Q = (\text{Subj} \rightarrow \text{Transj})) = f(\text{Adj})$



Rue de la Mare, Paris

$(\beta_Q = (\text{Subj} \rightarrow \text{Transj})) = f(\text{Ex})$



Rue Faidherbe, Paris

$(\beta_{\alpha_Q} = (\text{Adj} \rightarrow \text{Transj})) = f(\text{S})$



Rue Juliet, Paris



$(\beta\alpha_Q = (\text{Adj} \rightarrow \text{Transj})) = f(U)$



Rue Popincourt, Paris

$(\beta\alpha_Q = (\text{Adj} \rightarrow \text{Transj})) = f(E)$



Rue Duranti, Paris

$(\beta\alpha_Q = (\text{Adj} \rightarrow \text{Transj})) = f(\text{Sys})$



Rue Marcadet, Paris

$(\beta\alpha_Q = (\text{Adj} \rightarrow \text{Transj})) = f(\text{Abb})$



Cité Falaise, Paris

$(\beta\alpha_Q = (\text{Adj} \rightarrow \text{Transj})) = f(\text{Rep})$



Passage Courtois, Paris

$(\beta\alpha_Q = (\text{Adj} \rightarrow \text{Transj})) = f(\text{Ad})$



Villa Léandre, Paris

$(\beta\alpha_Q = (\text{Adj} \rightarrow \text{Transj})) = f(\text{Adj})$



Rue de la Pompe, Paris

$(\beta\alpha_Q = (\text{Adj} \rightarrow \text{Transj})) = f(\text{Ex})$



Rest. Le Bariolé, Paris

$(\alpha^{\circ}Q = (\text{Subj} \rightarrow \text{Adj})) = f(S)$



Rue des Rigoles, Paris

$(\alpha^{\circ}Q = (\text{Subj} \rightarrow \text{Adj})) = f(U)$



Rue de Châtillon, Paris

$(\alpha^{\circ}_Q = (\text{Subj} \rightarrow \text{Adj})) = f(E)$



Rue de l'Ermitage, Paris

$(\alpha^{\circ}_Q = (\text{Subj} \rightarrow \text{Adj})) = f(\text{Sys})$



Rue Pierre Leroux, Paris

$(\alpha^{\circ}_Q = (\text{Subj} \rightarrow \text{Adj})) = f(\text{Abb})$



Rue Amelot, Paris

$(\alpha^{\circ}_Q = (\text{Subj} \rightarrow \text{Adj})) = f(\text{Rep})$



Rue de Charenton, Paris

$(\alpha^{\circ}_Q = (\text{Subj} \rightarrow \text{Adj})) = f(\text{Ad})$



Rue Archereau, Paris

$(\alpha^{\circ}_Q = (\text{Subj} \rightarrow \text{Adj})) = f(\text{Adj})$



Rue Théophile Roussel, Paris



$(\alpha^{\circ}_Q = (\text{Subj} \rightarrow \text{Adj})) = f(\text{Ex})$



Rest. Le Moulin de la Galette, Paris

$(\beta^{\circ}_Q = (\text{Transj} \rightarrow \text{Subj})) = f(\text{S})$



Rue de la Crimée, Paris

$$(\beta^{\circ}_Q = (\text{Transj} \rightarrow \text{Subj})) = f(U)$$



Rue du Capitaine Tarron, Paris

$$(\beta^{\circ}_Q = (\text{Transj} \rightarrow \text{Subj})) = f(E)$$



Rue Lassus, Paris

$(\beta^{\circ}_Q = (\text{Transj} \rightarrow \text{Subj})) = f(\text{Sys})$



Rue Armand Carrel, Paris

$(\beta^{\circ}_Q = (\text{Transj} \rightarrow \text{Subj})) = f(\text{Abb})$



Rue Saint-André des Arts, Paris

$(\beta^{\circ}_Q = (\text{Transj} \rightarrow \text{Subj})) = f(\text{Rep})$



Rue Janssen, Paris

$(\beta^{\circ}_Q = (\text{Transj} \rightarrow \text{Subj})) = f(\text{Ad})$



Rue de l'Espérance, Paris

$(\beta^{\circ}_Q = (\text{Transj} \rightarrow \text{Subj})) = f(\text{Adj})$



Rue Affre, Paris

$(\beta^{\circ}_Q = (\text{Transj} \rightarrow \text{Subj})) = f(\text{Ex})$



Rue Magenta, Paris

$(\alpha^\circ\beta^\circ_Q = (\text{Transj} \rightarrow \text{Adj})) = f(S)$



Rue Le Bua, Paris

$(\alpha^\circ\beta^\circ_Q = (\text{Transj} \rightarrow \text{Adj})) = f(U)$



Rue Vital, Paris

$(\alpha^\circ\beta^\circ_Q = (\text{Transj} \rightarrow \text{Adj})) = f(E)$



Rue de l'Octroi, Paris

$(\alpha^\circ\beta^\circ_Q = (\text{Transj} \rightarrow \text{Adj})) = f(\text{Sys})$



Rue de l'Université, Paris

$(\alpha^\circ\beta^\circ_Q = (\text{Transj} \rightarrow \text{Adj})) = f(\text{Abb})$



Villa Saint-Mandé, Paris

$(\alpha^\circ\beta^\circ_Q = (\text{Transj} \rightarrow \text{Adj})) = f(\text{Rep})$



Boulevard de Picpus, Paris



$(\alpha^\circ\beta^\circ_Q = (\text{Transj} \rightarrow \text{Adj})) = f(\text{Adj})$



Rue Guy Patin, Paris

$(\alpha^\circ\beta^\circ_Q = (\text{Transj} \rightarrow \text{Adj})) = f(\text{Adj})$



Rue Suger, Paris

$(\alpha^\circ\beta^\circ_Q = (\text{Transj} \rightarrow \text{Adj})) = f(\text{Ex})$



Rest. Paprika, 28, avenue Trudaine, 75009 Paris

$(\text{id}_{Q\text{Adj}} = (\text{Adj} \rightarrow \text{Adj})) = f(\text{S})$



Rue de Charenton, Paris

$(id_{Q_{Subj}} = (Subj \rightarrow Subj)) = f(U)$



Passage Charles Dallery, Paris

$(id_{Q_{Transj}} = (Transj \rightarrow Transj)) = f(E)$



Rue Lassus, Paris

$(\alpha_J = (\text{Adjn} \rightarrow \text{Subjn})) = f(S)$



Rue René Villermé, Paris

$(\alpha_U = (\text{Adjn} \rightarrow \text{Subjn})) = f(U)$



Impasse Truillot, Paris

$(\alpha_J = (\text{Adjn} \rightarrow \text{Subjn})) = f(E)$



Rue Sadi Carnot, Paris

$(\alpha_J = (\text{Adjn} \rightarrow \text{Subjn})) = f(\text{Sys})$



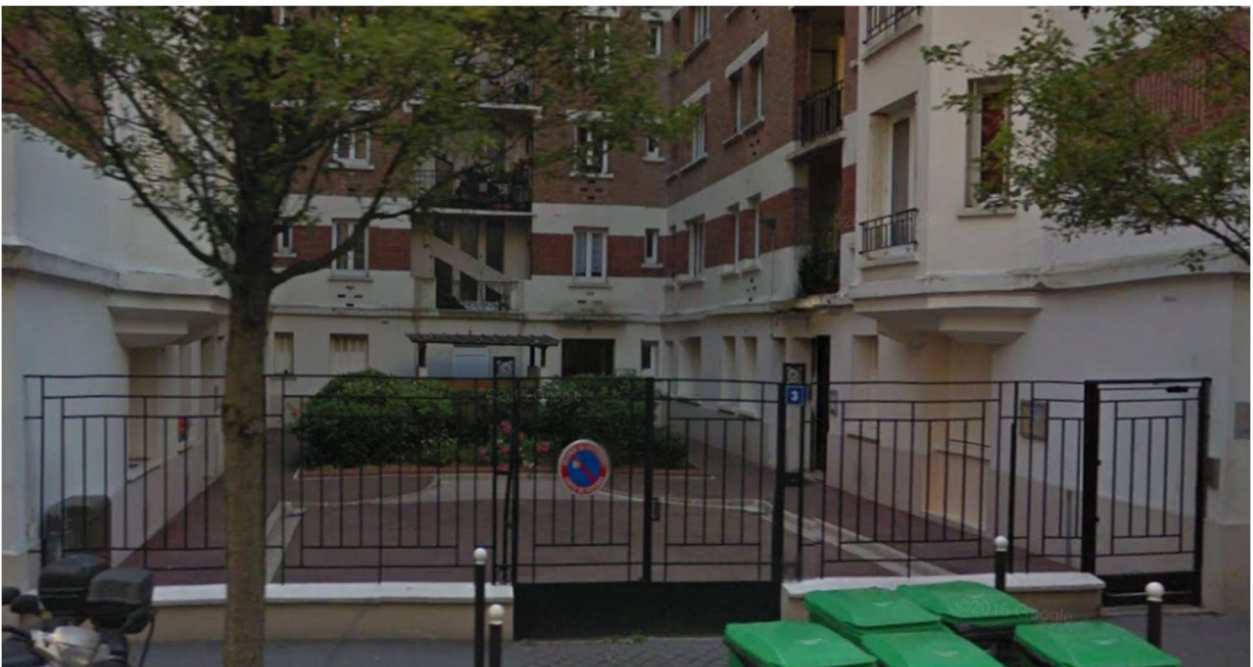
Rue de l'Orillon, Paris

$(\alpha_J = (\text{Adjn} \rightarrow \text{Subjn})) = f(\text{Abb})$



Rue Tournefort, Paris

$(\alpha_J = (\text{Adjn} \rightarrow \text{Subjn})) = f(\text{Rep})$



Rue Léon Dierx, Paris

$(\alpha_J = (\text{Adjn} \rightarrow \text{Subjn})) = f(\text{Adj})$



Rue de la Véga, Paris

$(\alpha_J = (\text{Adjn} \rightarrow \text{Subjn})) = f(\text{Adj})$



Rue du Moulinet, Paris

$(\alpha_J = (\text{Adjn} \rightarrow \text{Subjn})) = f(\text{Ex})$



Rest. Corcoran's Montmartre, Paris

$(\beta_J = (\text{Subjn} \rightarrow \text{Transjn})) = f(S)$



Rue Vauvenargues, Paris



$(\beta_J = (\text{Subjn} \rightarrow \text{Transjn})) = f(U)$



Rue de Crimée, Paris

$(\beta_J = (\text{Subjn} \rightarrow \text{Transjn})) = f(E)$



Rue Payenne, Paris

$(\beta_J = (\text{Subjn} \rightarrow \text{Transjn})) = f(\text{Sys})$



Rue Boyer, Paris

$(\beta_J = (\text{Subjn} \rightarrow \text{Transjn})) = f(\text{Abb})$



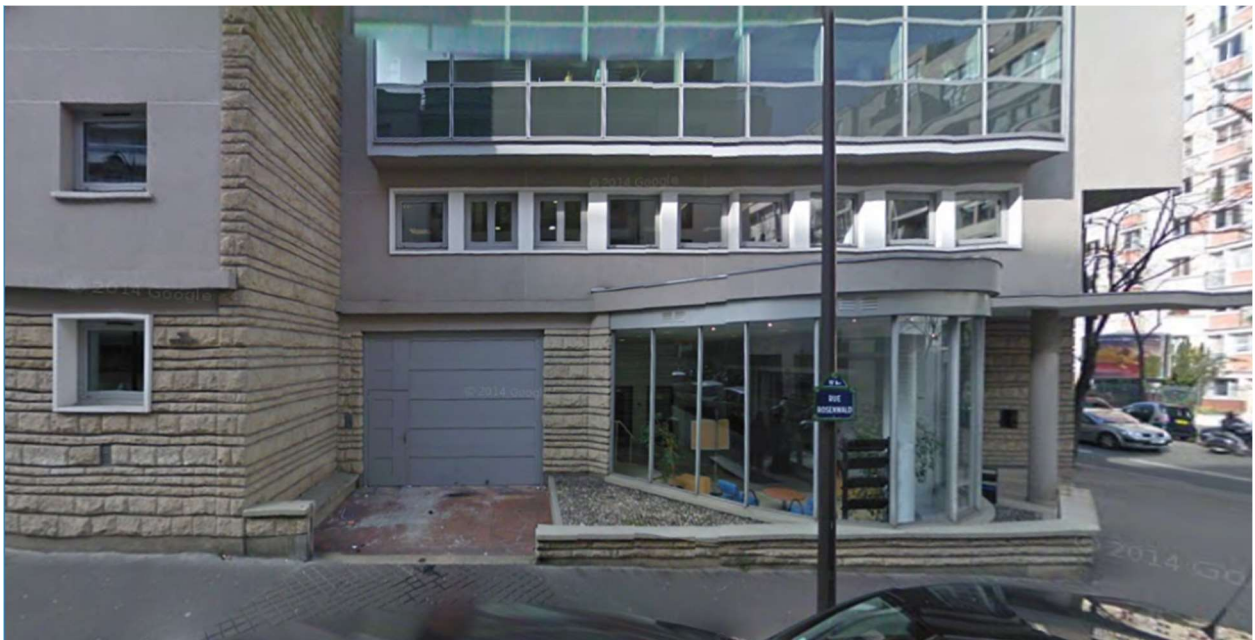
Rue de Belleville, Paris

$(\beta_J = (\text{Subjn} \rightarrow \text{Transjn})) = f(\text{Rep})$



Allée Saint-Just, Paris

$(\beta_J = (\text{Subjn} \rightarrow \text{Transjn})) = f(\text{Ad})$



Rue Rosenwald, Paris

$(\beta_J = (\text{Subjn} \rightarrow \text{Transjn})) = f(\text{Adj})$



Rue de la Pompe, Paris

$(\beta_J = (\text{Subjn} \rightarrow \text{Transjn})) = f(\text{Ex})$



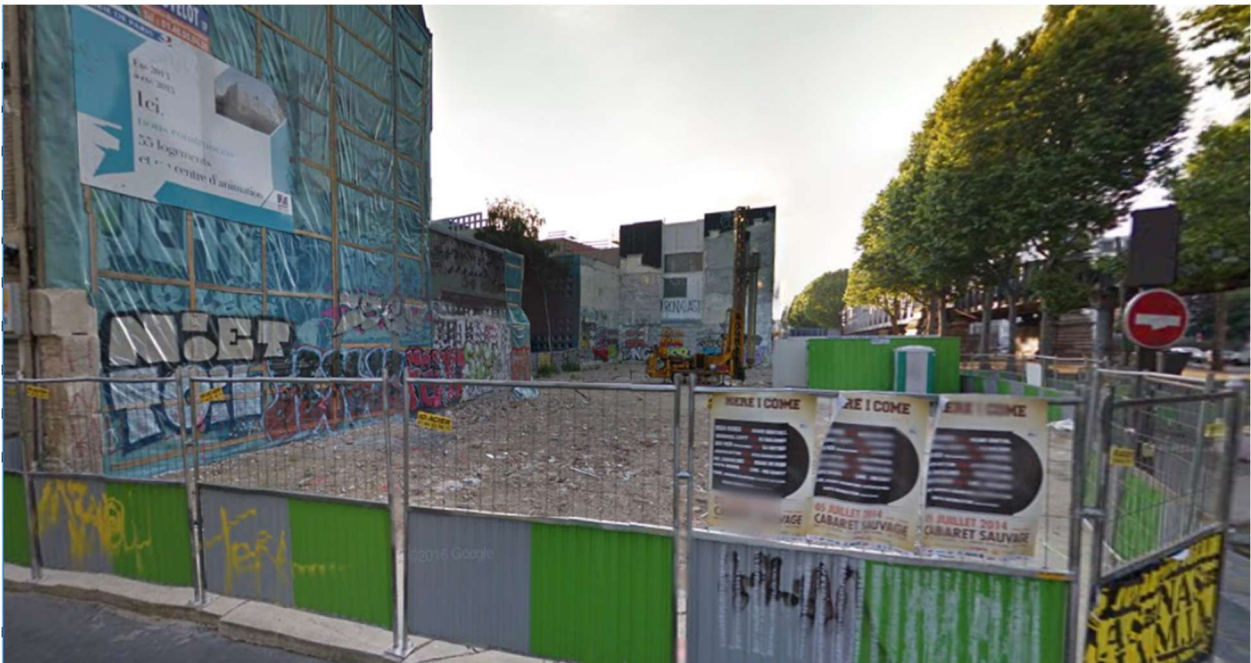
Rest. Le Magenta, Paris

$(\beta\alpha_J = (\text{Adjn} \rightarrow \text{Transjn})) = f(S)$



Rue de l'Abbé Groult, Paris

$(\beta\alpha_J = (\text{Adjn} \rightarrow \text{Transjn})) = f(U)$



Rue Philippe de Girard, Paris

$(\beta\alpha_J = (\text{Adjn} \rightarrow \text{Transjn})) = f(E)$



Rue Julien, Paris

$(\beta\alpha_J = (\text{Adjn} \rightarrow \text{Transjn})) = f(\text{Sys})$



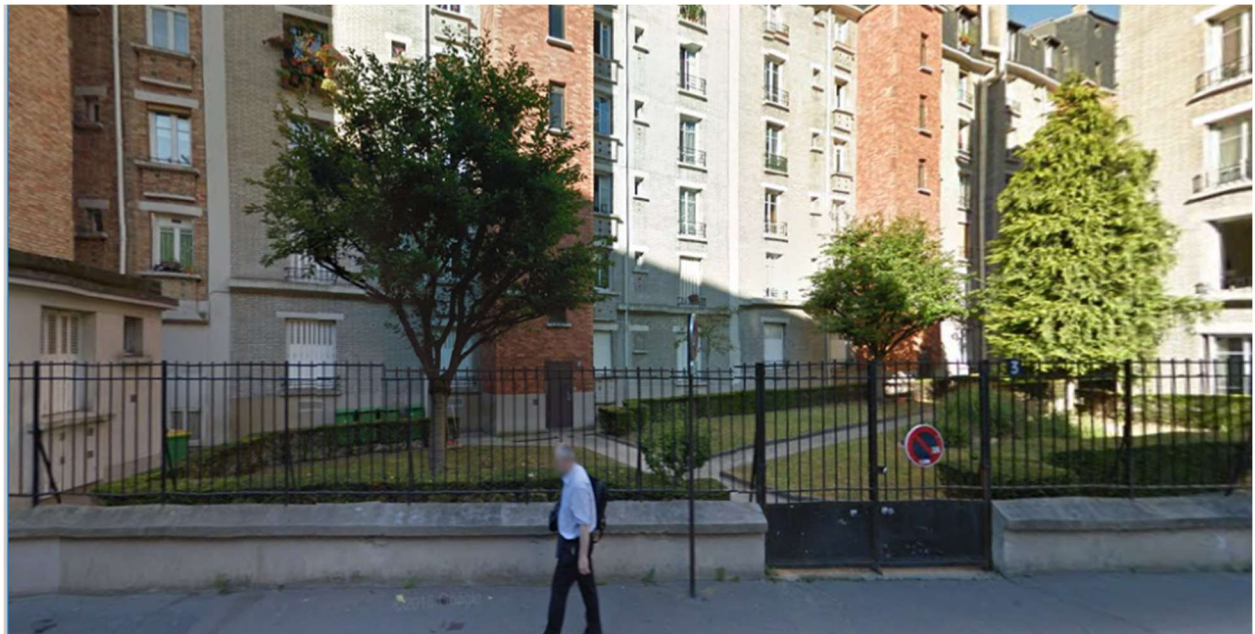
Rue Jean Maridor, Paris

$(\beta\alpha_J = (\text{Adjn} \rightarrow \text{Transjn})) = f(\text{Abb})$



Rue Paulin Méry, Paris

$(\beta\alpha_J = (\text{Adjn} \rightarrow \text{Transjn})) = f(\text{Rep})$



Rue Albert Bayet, Paris

$(\beta_{\alpha_j} = (\text{Adjn} \rightarrow \text{Transjn})) = f(\text{Ad})$



Rue du Père Brottier, Paris

$(\beta_{\alpha_j} = (\text{Adjn} \rightarrow \text{Transjn})) = f(\text{Adj})$



Rue de Rouen, Paris



$(\beta\alpha_J = (\text{Adjn} \rightarrow \text{Transjn})) = f(\text{Ex})$



Rest. La Robe de la Girafe, Paris

$(\alpha^{\circ}_J = (\text{Subjn} \rightarrow \text{Adjn})) = f(\text{S})$



Villa d'Alésia, Paris

$(\alpha^{\circ}_J = (\text{Subjn} \rightarrow \text{Adjn})) = f(U)$



Rue Fermat, Paris

$(\alpha^{\circ}_J = (\text{Subjn} \rightarrow \text{Adjn})) = f(E)$



Rue de l'Ermitage, Paris

$(\alpha^{\circ}_J = (\text{Subjn} \rightarrow \text{Adjn})) = f(\text{Sys})$



Rue de la Mare, Paris

$(\alpha^{\circ}_J = (\text{Subjn} \rightarrow \text{Adjn})) = f(\text{Abb})$



Rue Bignon, Paris

$(\alpha^{\circ}_J = (\text{Subjn} \rightarrow \text{Adjn})) = f(\text{Rep})$



Rue du Moulin de la Pointe, Paris

$(\alpha^{\circ}_J = (\text{Subjn} \rightarrow \text{Adjn})) = f(\text{Ad})$



Rue d'Aix, Paris

$(\alpha^{\circ}_J = (\text{Subjn} \rightarrow \text{Adjn})) = f(\text{Adj})$



Rue Villehardouin, Paris

$(\alpha^{\circ}_J = (\text{Subjn} \rightarrow \text{Adjn})) = f(\text{Ex})$



Rest. Corcoran's Montmartre, Paris

$(\beta^{\circ}_J = (\text{Transjn} \rightarrow \text{Subjn})) = f(S)$



Rue de Crimée, Paris

$(\beta^{\circ}_J = (\text{Transjn} \rightarrow \text{Subjn})) = f(U)$



Rue Scheffer, Paris

$$(\beta^{\circ}_J = (\text{Transjn} \rightarrow \text{Subjn})) = f(E)$$



Rue Cuvier, Paris

$$(\beta^{\circ}_J = (\text{Transjn} \rightarrow \text{Subjn})) = f(\text{Sys})$$



Rue du 4ème Septembre, Paris

$(\beta^{\circ}_J = (\text{Transjn} \rightarrow \text{Subjn})) = f(\text{Abb})$



Rue Montbrun, Paris

$(\beta^{\circ}_J = (\text{Transjn} \rightarrow \text{Subjn})) = f(\text{Rep})$



Rue du Vézelay, Paris



$(\beta^{\circ}_J = (\text{Transjn} \rightarrow \text{Subjn})) = f(\text{Ad})$



Rue Petit, Paris

$(\beta^{\circ}_J = (\text{Transjn} \rightarrow \text{Subjn})) = f(\text{Adj})$



Rue d'Alleray, Paris

$(\beta^{\circ}_J = (\text{Transjn} \rightarrow \text{Subjn})) = f(\text{Ex})$



Rest. Le Bariolé, Paris

$(\alpha^{\circ}\beta^{\circ}_J = (\text{Transjn} \rightarrow \text{Adjn})) = f(\text{S})$



Rue Le Bua, Paris

$(\alpha^\circ\beta^\circ_J = (\text{Transjn} \rightarrow \text{Adjn})) = f(U)$



Rue d'Annam, Paris

$(\alpha^\circ\beta^\circ_J = (\text{Transjn} \rightarrow \text{Adjn})) = f(E)$



Rue Pierre Leroux, Paris

$(\alpha^\circ\beta^\circ_J = (\text{Transjn} \rightarrow \text{Adjn})) = f(\text{Sys})$



Rue Fessart, Paris

$(\alpha^\circ\beta^\circ_J = (\text{Transjn} \rightarrow \text{Adjn})) = f(\text{Abb})$



Rue de Laborde, Paris

$(\alpha^\circ\beta^\circ_J = (\text{Transjn} \rightarrow \text{Adjn})) = f(\text{Rep})$



Rue de la Boule Rouge, Paris

$(\alpha^\circ\beta^\circ_J = (\text{Transjn} \rightarrow \text{Adjn})) = f(\text{Ad})$



Rue Saint-Didier, Paris

$(\alpha^\circ\beta^\circ_J = (\text{Transjn} \rightarrow \text{Adjn})) = f(\text{Adj})$



Rue Dubrunfaut, Paris

$(\alpha^\circ\beta^\circ_J = (\text{Transjn} \rightarrow \text{Adjn})) = f(\text{Ex})$



Rest. La Feria, Paris

## Literatur

- Bense, Max, Zeichen und Design. Baden-Baden 1971
- Bense, Max, Semiotische Prozesse und Systeme. Baden-Baden 1975
- Bense, Max, Semiotische Kategorien und algebraische Kategorien. In: *Semiosis* 4 (1976), S. 5-19 (= 1976a)
- Bense, Max, Vermittlung der Realitäten. Baden-Baden 1976 (= 1976b)
- Bense, Max, Die Unwahrscheinlichkeit des Ästhetischen. Baden-Baden 1979
- Bense, Max, Axiomatik und Semiotik. Baden-Baden 1981
- Bense, Max, Das Universum der Zeichen. Baden-Baden 1983
- Berger, Wolfgang, Funktoren und die Autoreproduktion der Zeichen. In: *Semiosis* 6 (1977), S. 16-21
- Birkhoff, George David, An Extended Arithmetic. In: *Duke Mathematical Journal* 3 (1937), S. 311-316
- Eilenberg, Samuel/Mac Lane, Saunders, Group Extensions and Homology. In: *Annals of Mathematics* 43 (1942), S. 757-831 (= 1942a)
- Eilenberg, Samuel/Mac Lane, Saunders, Natural Isomorphisms in Group Theory. In: *Proceedings of the National Academy of Sciences USA* 28 (1942), S. 537-543 (= 1942b)
- Klein Josef, Vom Adel des Gesetzes – zu einer Semiotik der Norm. In: *Semiosis* 33 (1984), S. 34-69
- Leopold, Cornelia, Kategoriethoretische Konzeption der Semiotik. In: *Semiosis* 57/58 (1990), S. 93-100
- Marty, Robert, Catégories et foncteurs en sémiotique. In: *Semiosis* 6 (1977), S. 5-15
- Peirce, Charles Sanders, Prolegomena to an apology for pragmatism. In: *The Monist* 6/4 (1906), S. 492-546
- Peirce, Charles Sanders, Analysis of Creation. In: *Semiosis* 2 (1976), S. 5-9
- Schubert, Horst, Kategorien. 1. Bd. Berlin 1970
- Toth, Alfred, Entwurf einer Semiotisch-Relationalen Grammatik. Tübingen 1997
- Toth, Alfred, Objekttheoretische Invarianten. In: *Electronic Journal for Mathematical Semiotics*, 2013
- Toth, Alfred, Grammatik der Stadt Paris. 2 Bde. Tucson 2016 (= 2016a)
- Toth, Alfred, Grundlagen einer Modelltheorie der Ontik I-LVII. In: *Electronic Journal for Mathematical Semiotics*, 2016b

- Toth, Alfred, Grundlegung einer ontischen Automatentheorie. In: Electronic Journal for Mathematical Semiotics, 2017a
- Toth, Alfred, Ontische Automatentheorie 1-45. In: Electronic Journal for Mathematical Semiotics, 2017b
- Walther, Elisabeth, Allgemeine Zeichenlehre. 2. Aufl. Stuttgart 1979